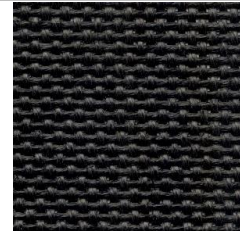


ESONE®

PTFE & Silicone Coated Fiberglass Fabric & Belt

TDS of OPEN MESH SERIE YS6002



Product	Product Category	Coating
PTFE GLASS FABRIC	OPEN MESH SERIE	PTFE

Properties	Metric	Imperial
Standard width Please ask for other widths	1000, 1500, 2050, 2600, 2800, 3200, 3650, 4000 mm	39.5, 59, 81, 102.5, 110, 126, 144, 158 inches
Mesh Size	1 x 1 mm	0.0393 x 0.0393 inches
Tensile Strength	446 N/cm Warp	255 lbs/inches Warp
	330 N/cm Fill	189 lbs/inches Fill
Color	Black	Black
Temperature resistance	-73 to +260 °C	-100 to +500 °F

ESONE® open mesh series, PTFE coated mesh belt is coated with high quality PTFE resin, the basic material is woven open mesh fiberglass or aramid fabric (like Kevlar) or Nomax. The main applications is screen printing, drying industry, packaging industry, textile industry, wood processing industry and so on, which is used as heat resistant and non stick conveyor belt to transport materials through ovens. 1x1mm PTFE open mesh fabric is FDA & LFGB certificated, can be used in direct contact with food.



ESONE® is a registered trademark owned by
 Jiangsu Eson New Material Co.,Ltd
 Taixing Youngsun FL-Plastics Co.,Ltd
 Western End of South Third Ring Road, Taixing, Jiangsu, China
 Tel: 0523-87590206 E-Mail: sales@chinayoungsun.com